

## M5 Junction 25 Improvements Scheme Project Bulletin: September 2019

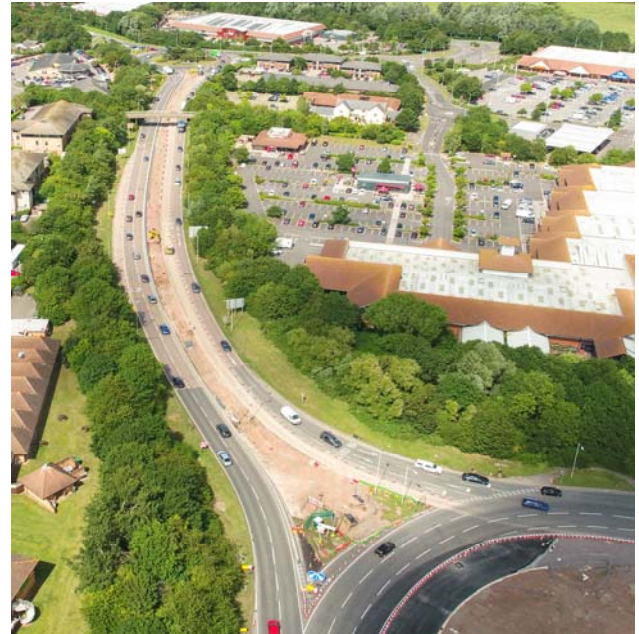
### Scheme Update

---

#### Toneway

Works have progressed well and we are preparing the ground for surfacing which will happen later this month. This will enable us to move the traffic at the end of the month to allow us to start replacing the concrete road on the outbound side first.

The Toneway will be CLOSED in both directions overnight for further works. This will be carried out from 9pm -6am on the 28<sup>th</sup>, 29<sup>th</sup> and 30<sup>th</sup> September. Further information will be available on our website <https://community.alungriffiths.co.uk>



#### Link Road

As shown in the photo on the left, works to the Toneway are progressing rapidly. The monitoring system has now been successfully installed, allowing us to start constructing the embankment.

At this stage, you will see the biggest change, which can be seen at our viewing point on the Junction 25 roundabout where more information is displayed.

---

## M5 Junction 25 Improvement Scheme – August 2019 – Continued

### Public Queries

We appreciate all feedback received and we do our utmost to ensure that the public are at the forefront of our decisions. As an example, following public feedback, we implemented yellow hatch markings on the Hankridge Roundabout, giving customers from the local retail park increased safe opportunities to leave. Since this has been installed we have constantly monitored the traffic and found that the flow has improved.



### Park and Ride

The park and ride's opening hours are the same as usual and busses will be running to and from this location. For further information about the park and ride, please visit [HERE](#)

## Subscribe to Our Newsletters

If you would like to subscribe to receive future Newsletters and Bulletins, please click [HERE](#) and complete the online form for Mail Chimp. OR use this QR code.



We would be pleased to hear your comments. You can get in touch via our web site [community.alungriffiths.co.uk](https://www.community.alungriffiths.co.uk) or by contacting our Public Liaison Officer Jim Aitken on 0330 041 2184\* or [M5J25@alungriffiths.co.uk](mailto:M5J25@alungriffiths.co.uk)

\*Calls to this number are charged at national call rates and included in inclusive minute plans from landlines and mobiles

Travel Somerset – for live travel alerts, roadworks information and winter weather updates

On Twitter @TravelSomerset and online 24/7 at <https://www.travelsomerset.co.uk/>

Junction 25 Somerset CC Webpage <https://www.travelsomerset.co.uk/j25/>